



# CapTel® 840i

See captions of everything your caller says!

Be sure of what callers say - **everytime** - with the **CapTel 840i**. This remarkable phone works like a traditional telephone, but it also shows written captions of everything your caller says. You enjoy familiar telephone calls with the added benefit of captions - helping you catch every word.

## Requires

- Landline Telephone Service
- High-speed Internet access (can be WiFi or Ethernet connection)\*
- Standard electrical power outlet

\* Depending on your setup a router may also be required to connect more than one device to the Internet.



CapTel®  
Captioned Telephone

## Benefits of CapTel 840i

- Extremely large, high-resolution 7" captions window with adjustable font sizes and colors.
- Built-in Answering Machine shows you captions of your voice messages.
- Adjustable volume control (up to 40dB gain) for captioned calls.
- One-touch access to CapTel Help Line – 24 hours a day, 7 days a week (dedicated button automatically connects you to Customer Service).
- Easy-to-follow menu system with Yes/No questions.
- Phone Book allows you to easily store and dial more than 95 names/numbers.
- Speed dial keys for one-touch dialing of frequently called numbers.
- Caller-ID capable - shows you who is calling right on the display.
- Spanish-to-Spanish captioning available, with Spanish-language menus.
- AES encryption for optimal security and privacy.

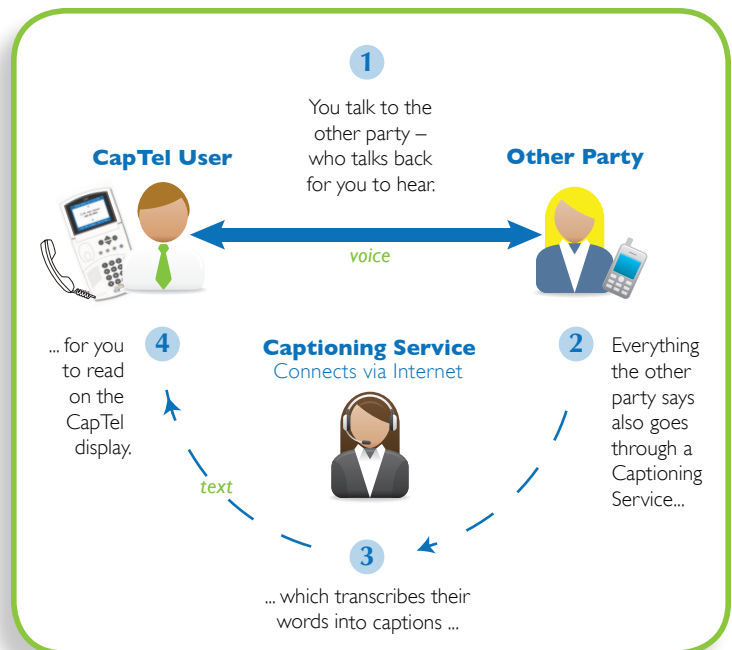
To learn more about CapTel 840i  
visit [www.CapTel.com](http://www.CapTel.com)

## CapTel 840i Requirements

The CapTel 840i uses your telephone service and an Internet connection to give you the best of both worlds – voice and captions – during your calls.

- High-speed Internet access – connects via WiFi or with an Ethernet jack. Depending on your setup, additional equipment, such as a router, may also be required.
- Telephone service (can be analog line, VOIP, FIOS, DSL or digital cable phone service. Cannot be cellular service.) Not compatible with PBX phone systems unless an analog port is available.
- Electrical power (AC adapter plugs into a standard wall outlet).

### How CapTel 840i Works:



Specifications subject to change. CapTel service is designed exclusively for individuals with hearing loss and is funded and regulated by the FCC.

CapTel is the latest innovation from



CapTel is a registered trademark of Ultratec, Inc.

1-800-233-9130 (CapTel/Voice/ TTY)  
[www.Weitbrecht.com](http://www.Weitbrecht.com)  
[CapTel@Weitbrecht.com](mailto:CapTel@Weitbrecht.com)

Distributed by



903-516401 4/13